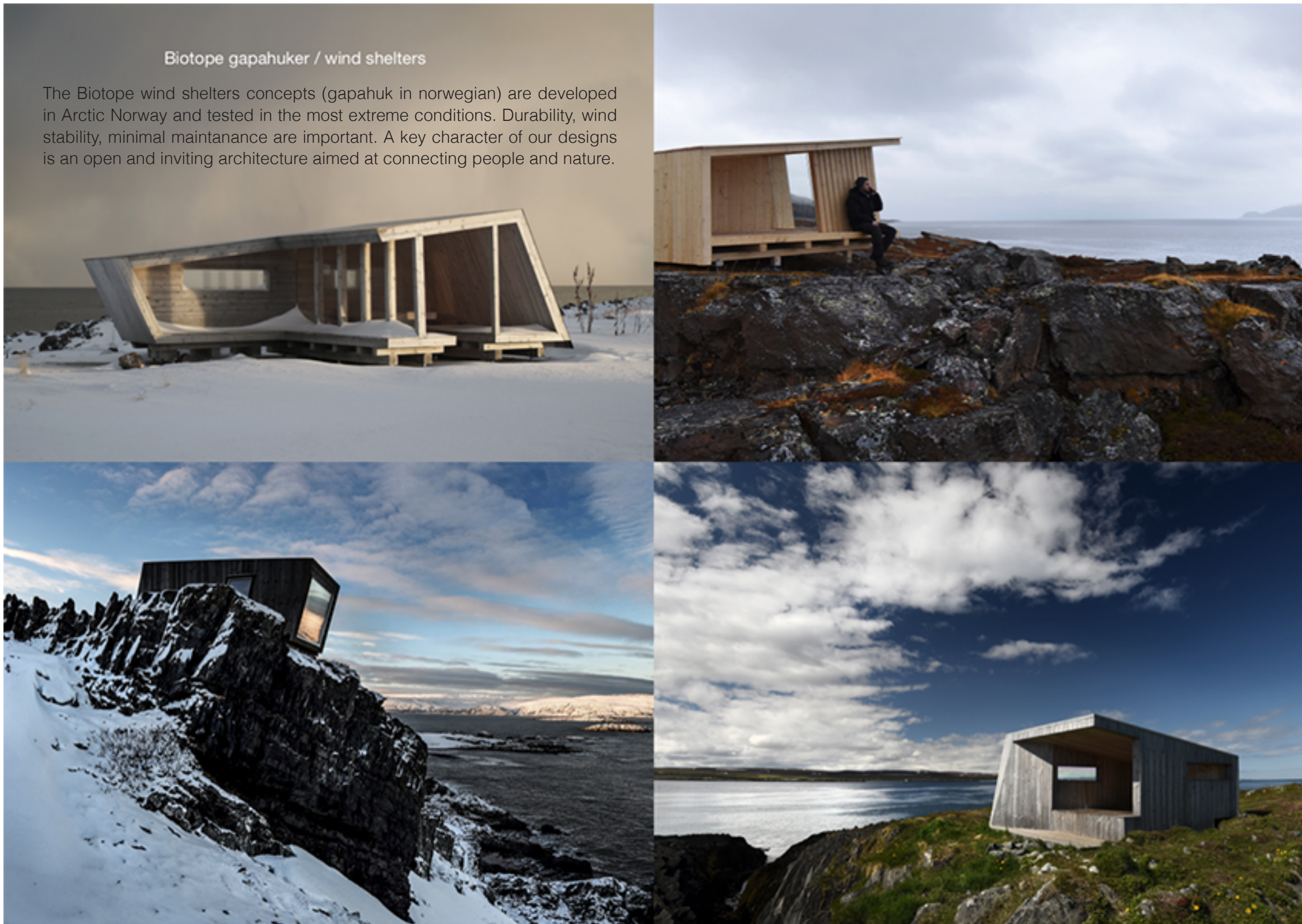


Öxarfjörður
Seal Watching
Shelter

biotope
ARCHITECTURE & NATURE

Biotope gapahuker / wind shelters

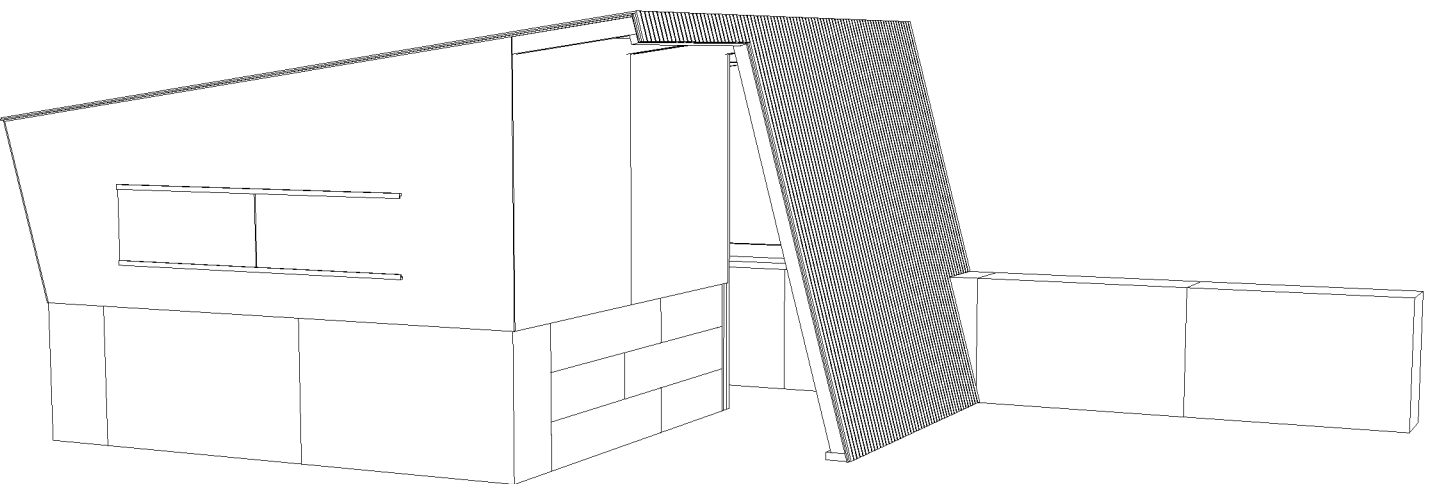
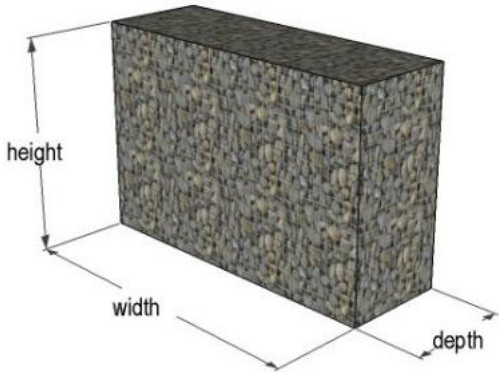
The Biotope wind shelters concepts (gapahuk in norwegian) are developed in Arctic Norway and tested in the most extreme conditions. Durability, wind stability, minimal maintainance are important. A key character of our designs is an open and inviting architecture aimed at connecting people and nature.



MATERIALS List

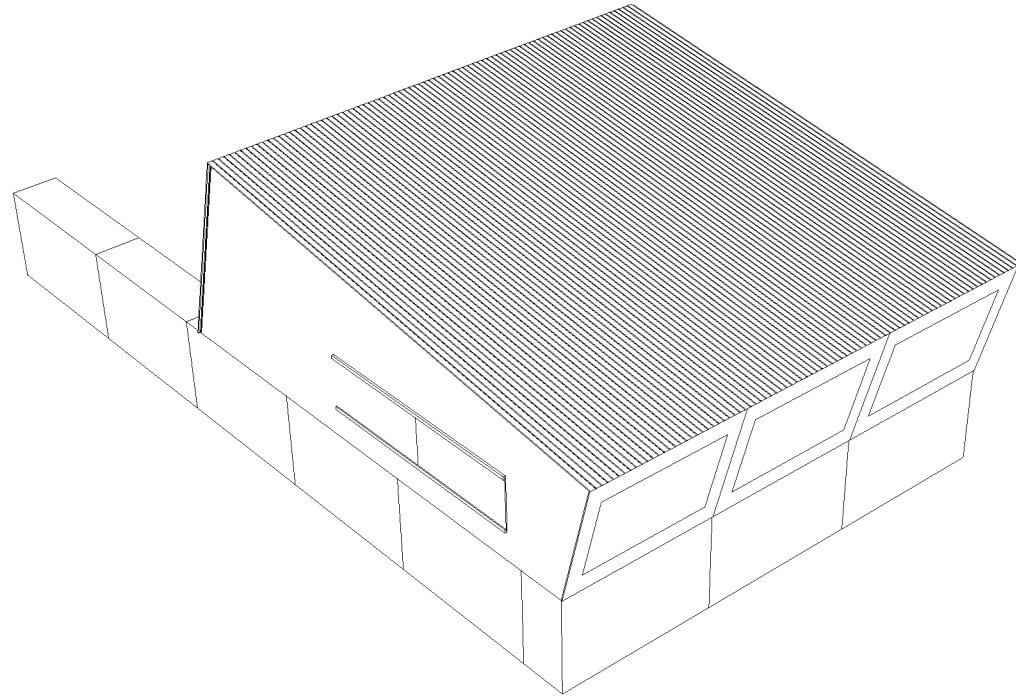
BASE

- 1500x900x450mm Rectangular Gabion x10
_ For SUPPORTING Wall
- 1500x600x300mm Rectangular Gabion x3
- 975x600x300mm Rectangular Gabion x3
- 1500x450x300mm Rectangular Gabion x1
- 975x450x300mm Rectangular Gabion x1
- 1500x300x300mm Square Gabion x1
- 975x300x300mm Square Gabion x1
_ For SEATING Arrangement



STRUCTURE

- 148x98mm KEBONY Character beam
_ For SUPPORTING Structure
- 98x98mm Structural Timber C24
_ For SUPPORTING Structure
- 9mm Marine-Grade Plywood
- Vempro Breathable Wind Barrier



CLADDING

- 19x120mm Kebony Clear RAP shiplap 90°
_ Smooth w/shadow line _ #2454

OPENINGS

- 9mm Abrasion Resistant Plexiglass _ (PMMA)

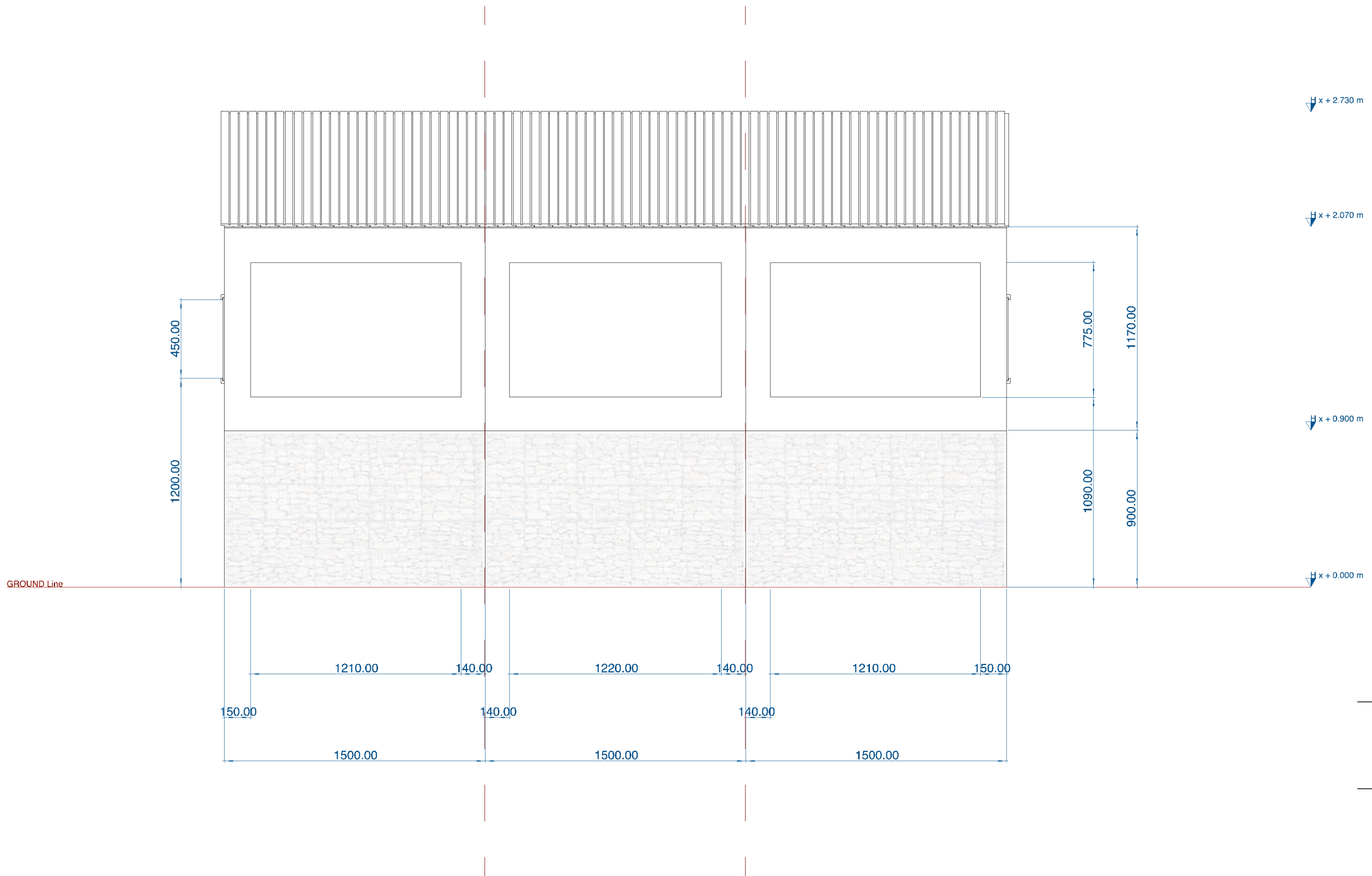
10 / 05 / 2019

MATERIALS

page_ 02

biotope
ARCHITECTURE & NATURE

2019 © All Rights Reserved



scale@A3 1:25

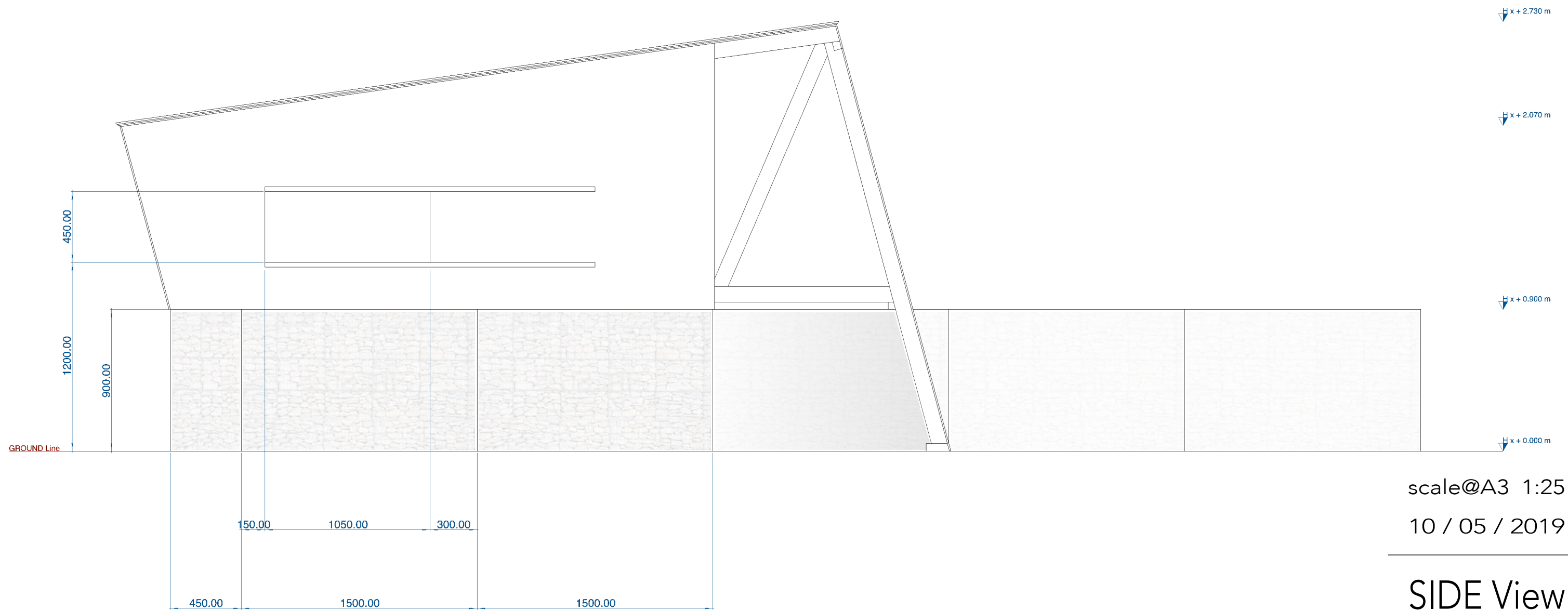
10 / 05 / 2019

FRONT View

page_03

biotope
ARCHITECTURE & NATURE

2019 © All Rights Reserved



scale@A3 1:25

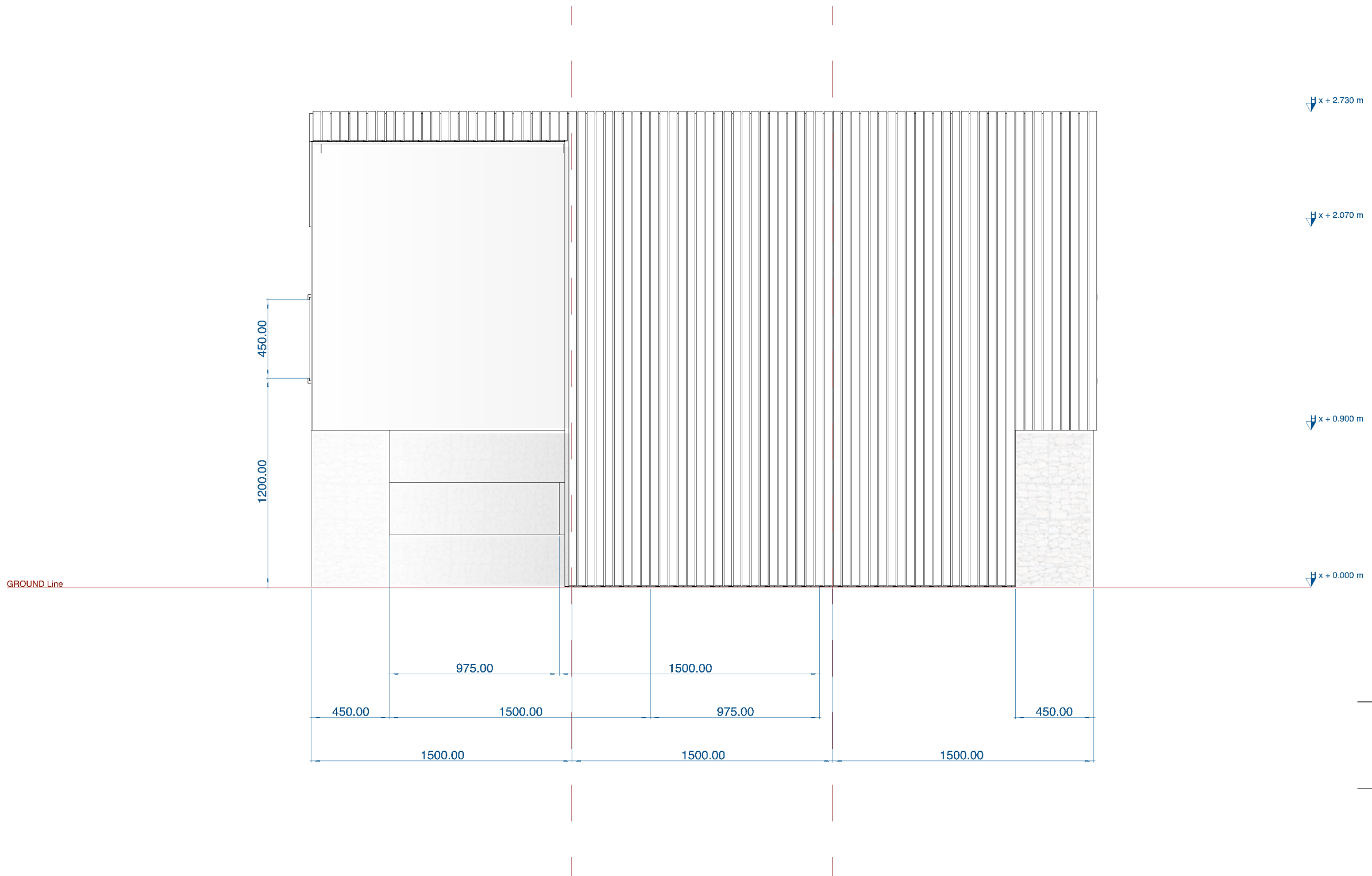
10 / 05 / 2019

SIDE View

page_04

biotope
ARCHITECTURE & NATURE

2019 © All Rights Reserved



scale@A3 1:25

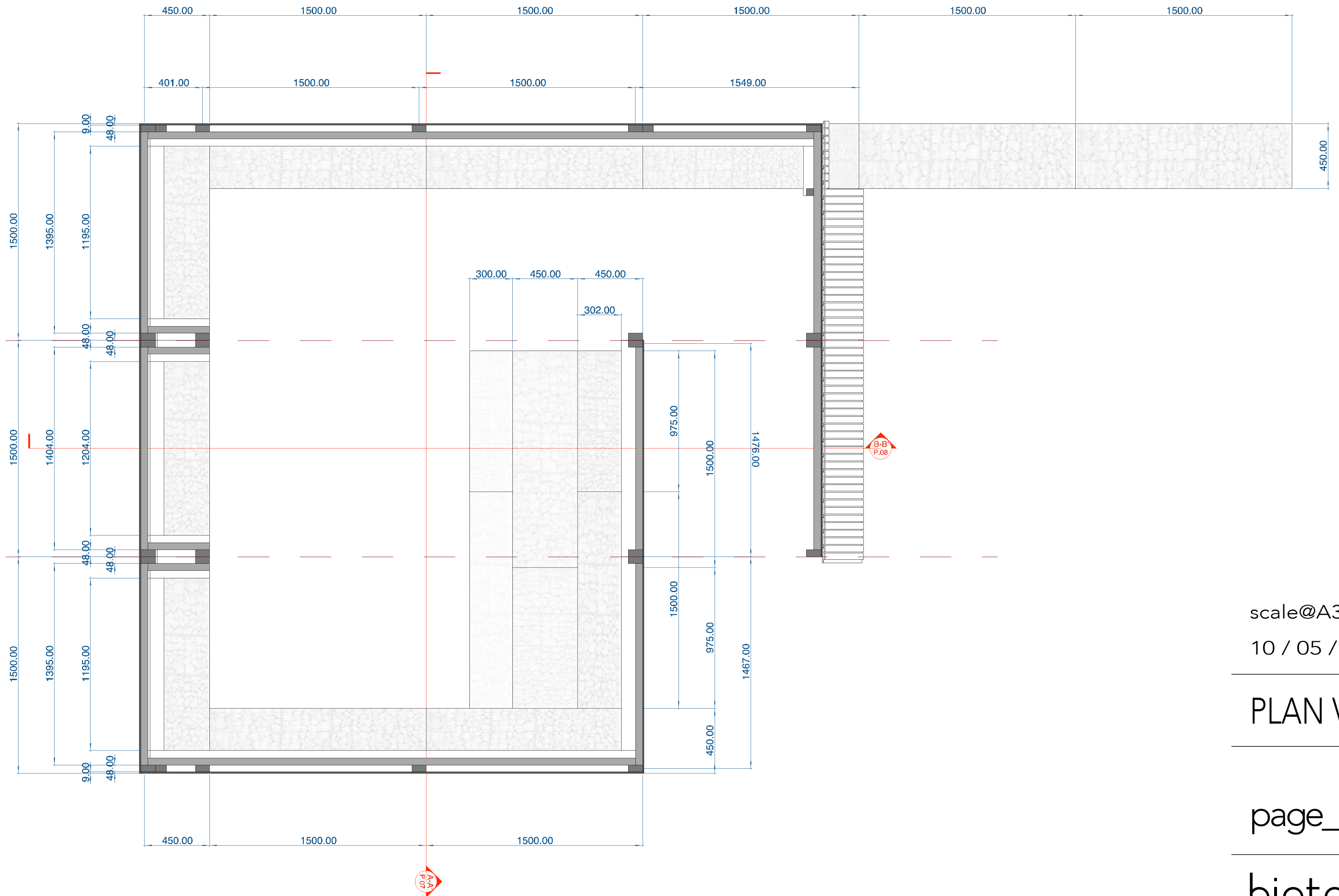
10 / 05 / 2019

BACK View

page_ 05

biotope
ARCHITECTURE & NATURE

2019 © All Rights Reserved



scale@A3 1:25

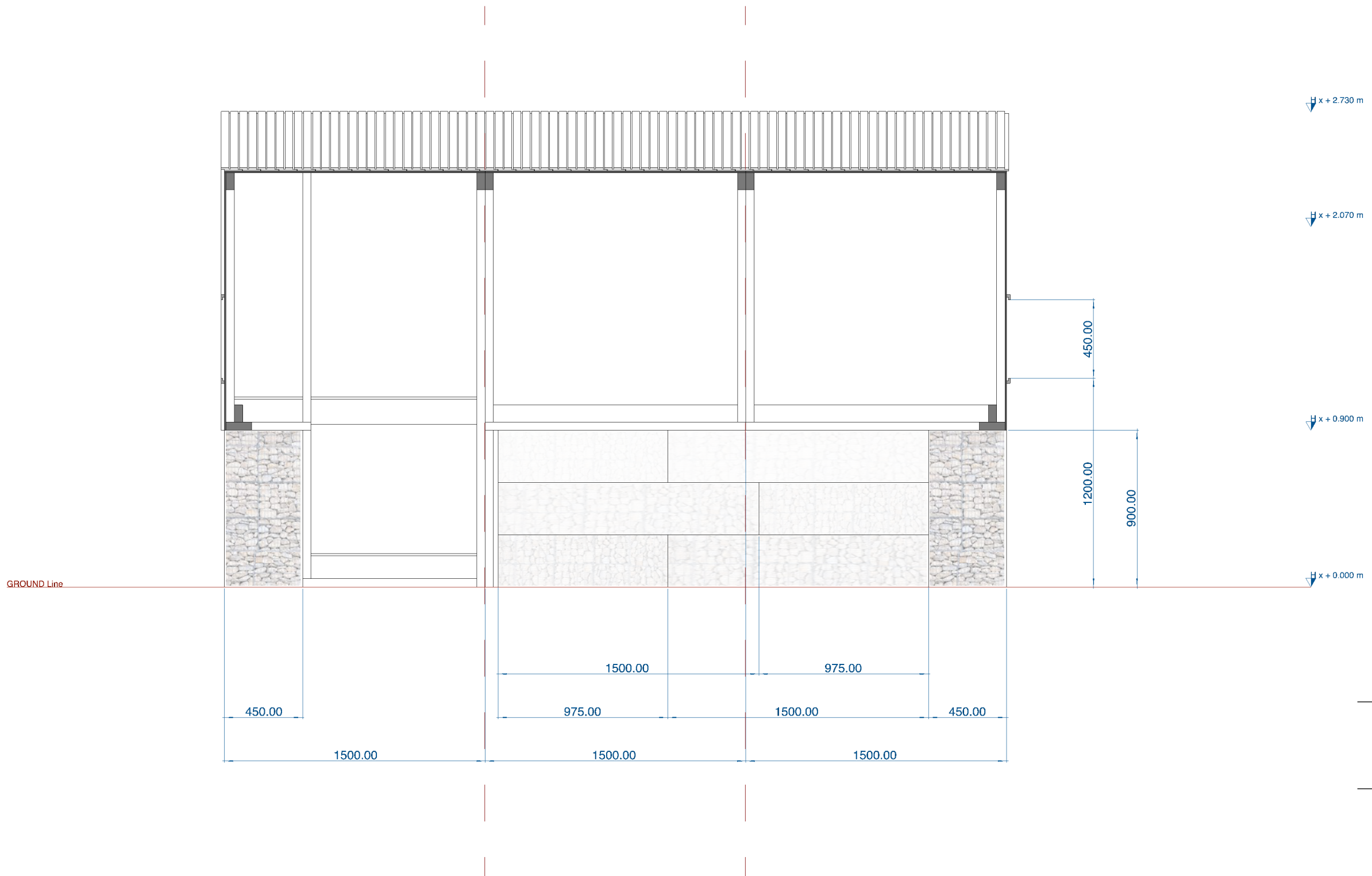
10 / 05 / 2019

PLAN View

page_06

biotope
ARCHITECTURE & NATURE

2019 © All Rights Reserved



scale@A3 1:25

10 / 05 / 2019

A-A' SECTION

page_07

biotope
ARCHITECTURE & NATURE

2019 © All Rights Reserved



Biotope © 2019

All materials contained in this paper/pdf/design brief are protected by international copyright law. The content may not be reproduced, distributed, displayed or published without prior permission of copyright holder Biotope. The work includes the overall form as well as the arrangement and composition of spaces and elements in the design, but does not include individual standard features. The architectural concept and the technical drawings remains copyright of Biotope and any changes should be queried with the designer.





biotope

biotope
ARCHITECTURE & NATURE

2019 © All Rights Reserved