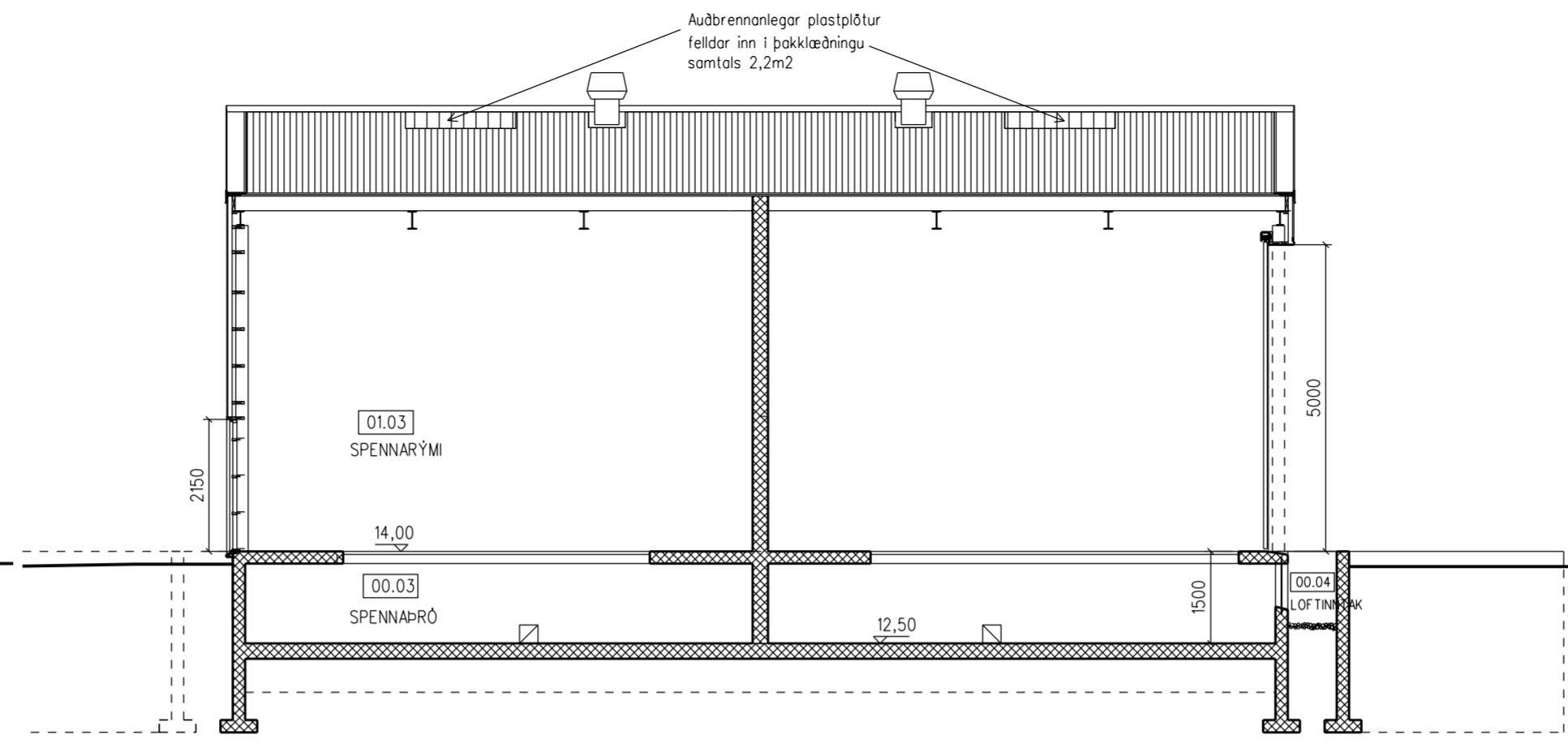
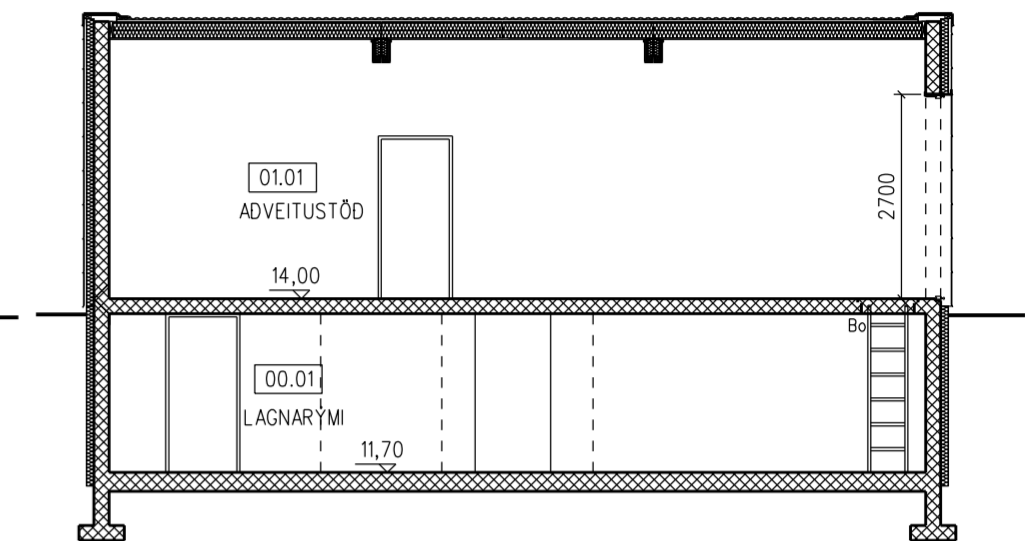


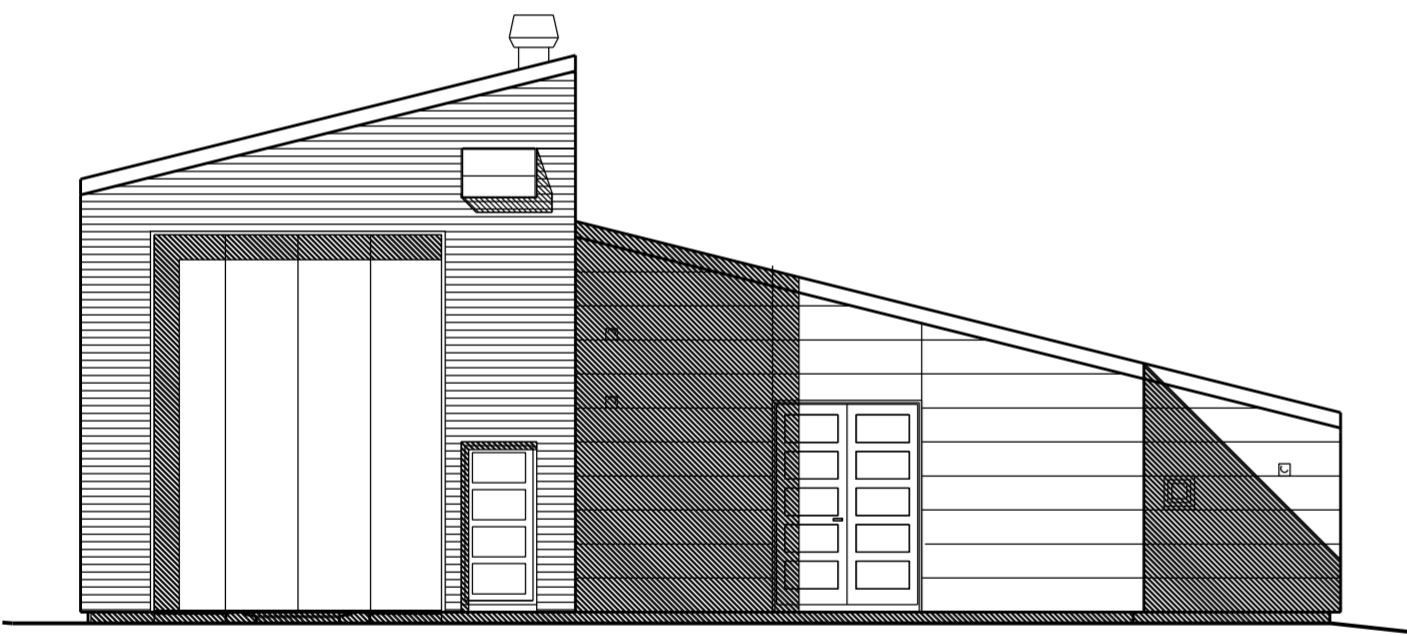
Skurður A-A



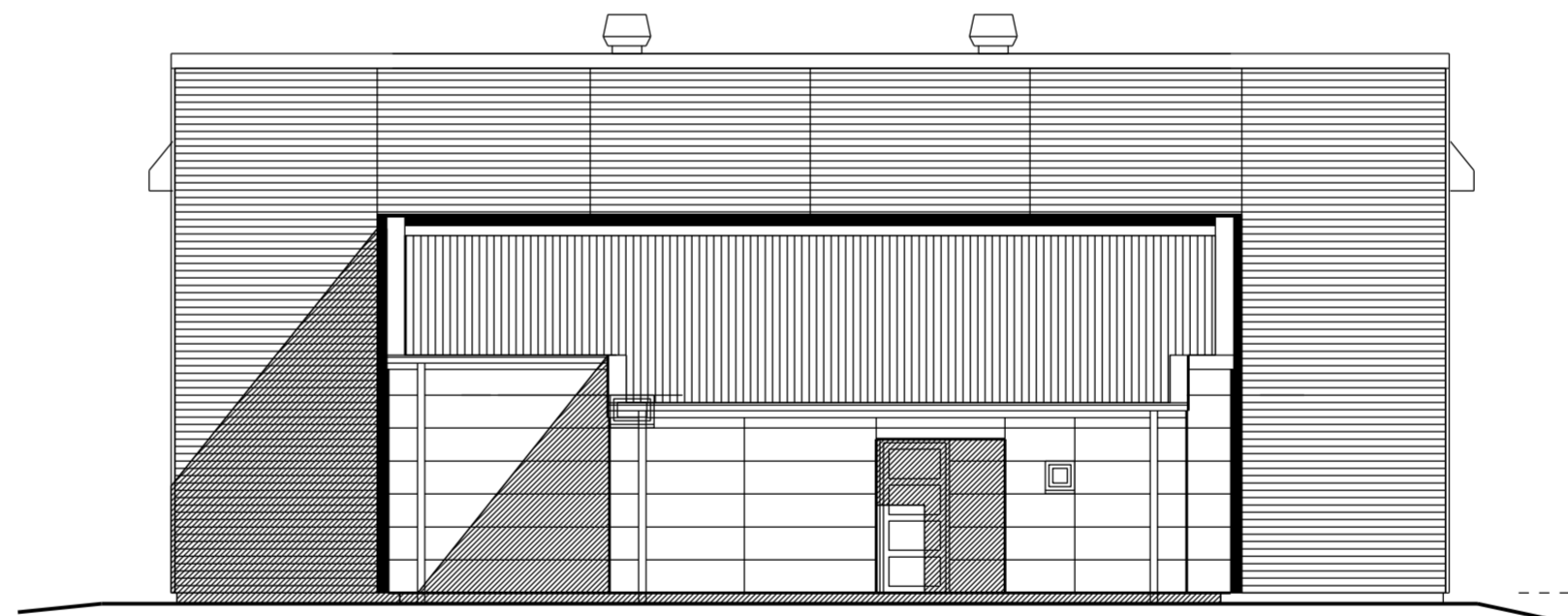
Skurður C-C



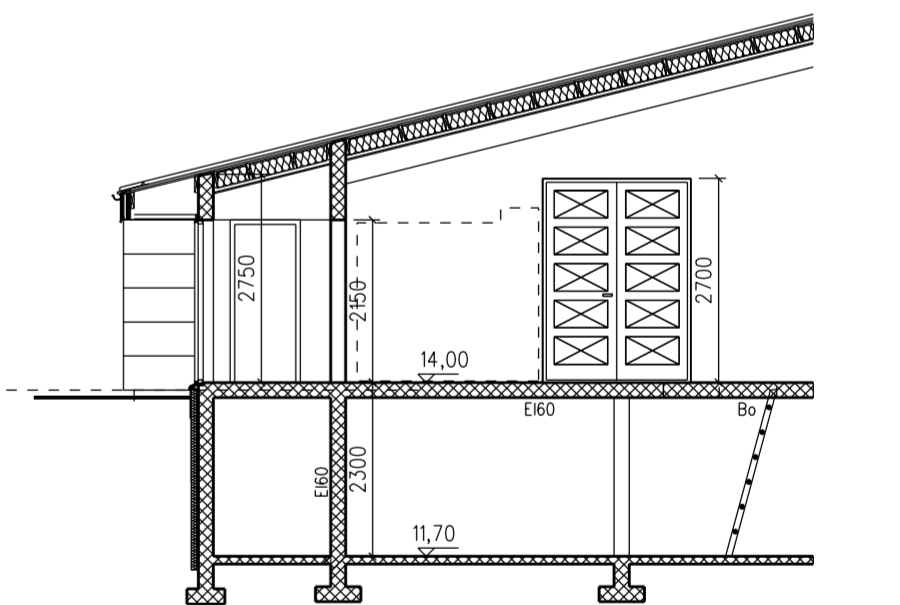
Skurður D-D



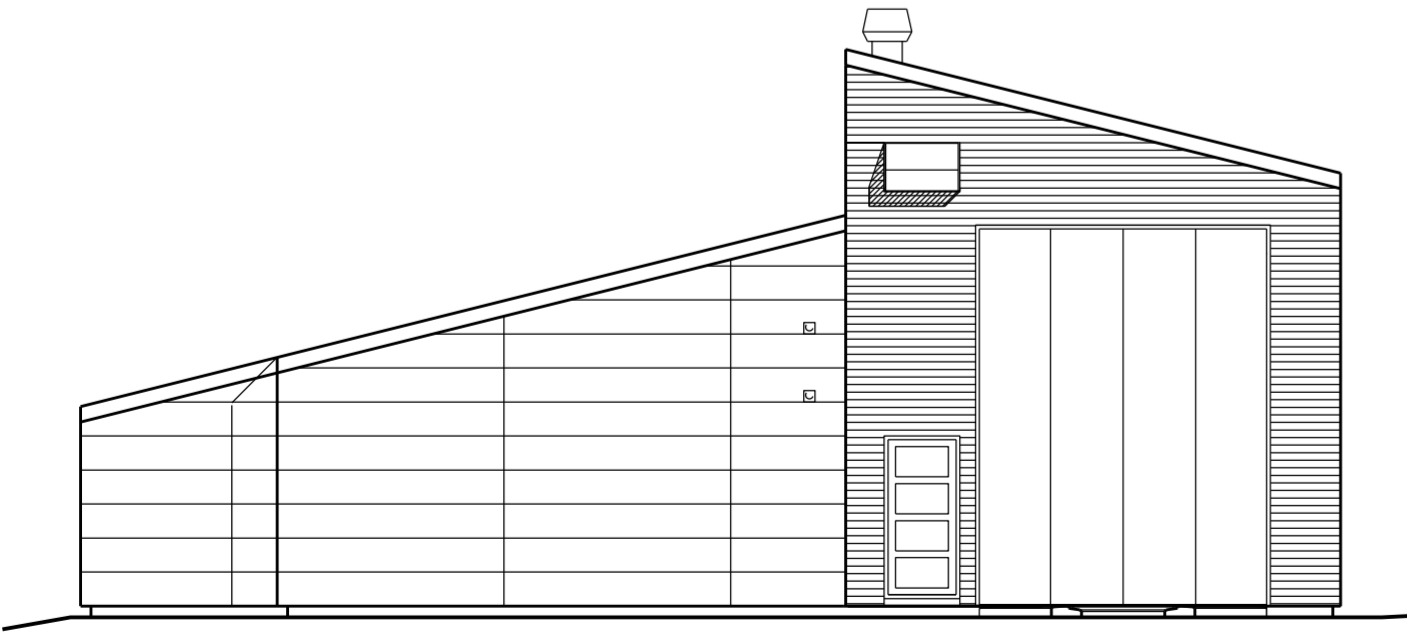
Norðurhlíð



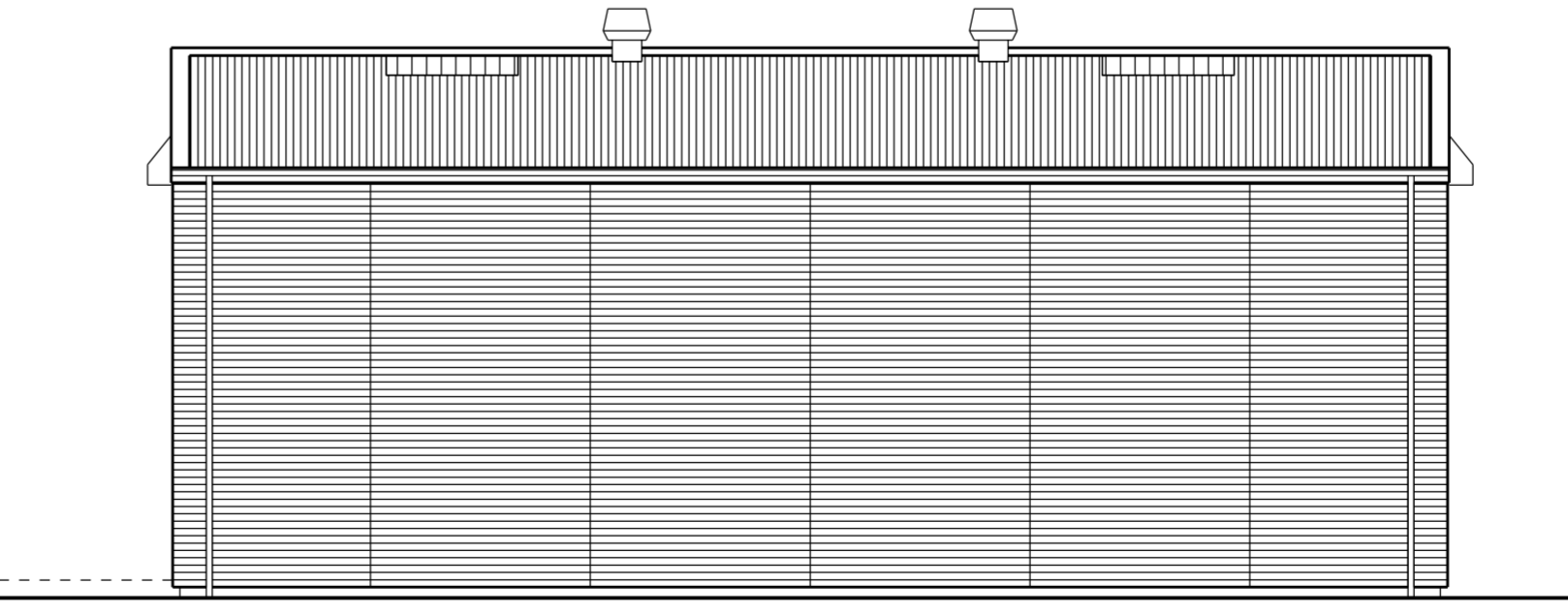
Vesturhlíð



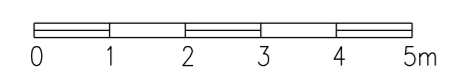
Skurður B-B



Suðurhlíð



Austurhlíð



Sjá texta á blaði 0.01



HELGI HAFLÍÐASON, ARKITEKT FAÍ
 STUÐLASELI 44, 109 REYKJAVÍK, sími og fax: 552 2149
 kt. 020341-2979, netfang: helgiha@simnet.is

VERK: Aðveitustöð Rarik, Kópaskeri
 VERKNR.: 21021

HEITI: Skurðir, útlit
 TEKN. NR.: 0.02

KVARDI: 1:100
 DAGS.: 20. okt. 2021